

MINOR COUPLER

Application

- Used for piping of compressed air connections.
- Used for air tool equipped with drive and impact.

Feature

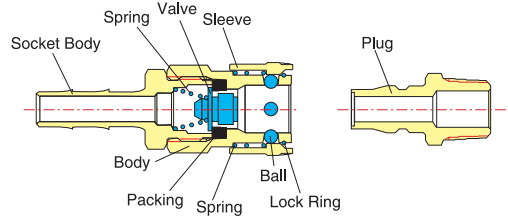
- Light and easy to use for it's made of ZnDc.

Specification

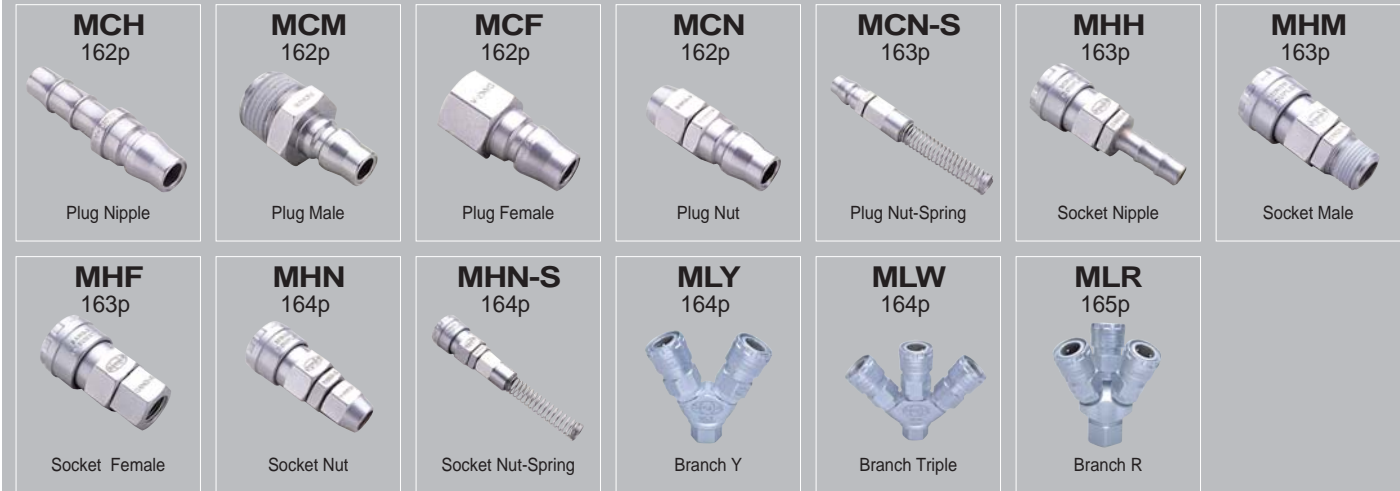
Fluid	Air
Material	ZnDc(chrome-plated)
Working Pressure Range	10kgf/cm ² (1000kPa)
Maximum Pressure	15kgf/cm ² (1500kPa)



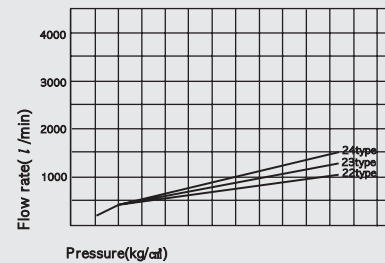
Structural Diagram



Minor Coupler



Flow Rate



Measuring Conditions

- Fluid type : Air
- Temperature : Room temperature(20 °C)

How to check table

This diagram shows the flow quantity of input condition in flowing air.

Example

For 24 type, in case using pressure is 5 kg/cm², find out flowing rate of vertical part according to the interchange of 24 type's round line and indicated arrow's pressure.

Product Code System

MC H 22

① ② ③

① Model

MC	Plug
MH	Socket

② Type

H	Hose Stem
M	Male Thread
F	Female Thread
N	Hose Nut Type

③ Thread Size(T)

Size	22	23	24
H	9.0	11.0	15.0
M	R1/4	R 3/8	R1/2
F	Rc1/4	Rc 3/8	Rc1/2

Size	21	22	23
N	8 × 5	10 × 6.5	12 × 8

► Minimum Sectional Area (mm²)

22 Type		23 Type		24 Type	
H	M · F	H	M · F	H	M · F
19	32	32	32	32	32

Common Using Precautions of Coupler Series

Never fail to check the following

! WARNING

1. Avoid applying or removing when pressure is on. It causes the danger of jumping of plug body.
2. Never touch the equipment under pressure in the state of putting plug and socket on the body. It causes "opening" by touch.
3. Never use coupler in place of rotary joint or other revolving joint.
4. Secure to flow the fluid from socket to plug.
5. Avoid the instrument or machine giving strong bending weight, excessive vibration or shock.
6. To use the coupler on a vibration tool such as jet chisel, be sure to connect with 30_{cm} rubber tube between tool and coupler.

! CAUTION

1. When putting plug into socket, secure to push it until it stops. Otherwise it may cause leakage. In addition, be sure to check whether it will come out or not by pulling it out.
2. Be careful of plug body jumping by compressed air discharging when disconnecting.
3. Be sure not only to have dust or contamination with intended fluid but also to have flaws on body. It may cause leakage.
4. When pushing tube into the socket body, fix it with hose-band after wearing silicon.
5. Never fasten the thread over maximum limit of torque. It may cause breakage.

MCH

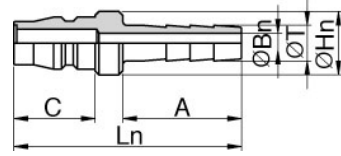
Plug Nipple



MODEL [T]

Tube (Metric) - Thread(R)

MODEL	C	ØT
MCH22-S ZNDC	20.5	9
MCH23-S ZNDC	20.5	9.6
MCH24-S ZNDC	20.5	15



MCM

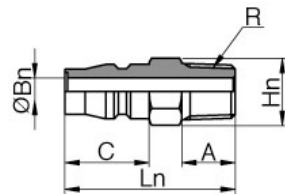
Plug Male



MODEL [T]

Tube (Metric) - Thread(R)

MODEL	C	R
MCM22-S ZNDC	20.5	R1/4
MCM23-S ZNDC	20.5	R3/8
MCM24-S ZNDC	20.5	R1/2



MCF

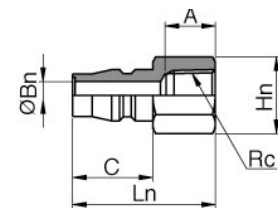
Plug Female



MODEL [T]

Tube (Metric) - Thread(R)

MODEL	C	Rc
MCF22-S ZNDC	20.5	Rc1/4
MCF23-S ZNDC	20.5	Rc3/8
MCF24-S ZNDC	20.5	Rc1/2



MCN

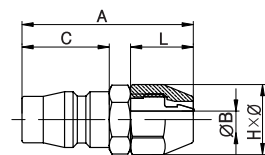
Plug Nut



MODEL [ØD]

Tube (Metric) - Thread(R)

MODEL	C	Tube
MCN21-S ZNDC	20.5	8 × 5
MCN23-S ZNDC	20.5	10 × 6.5
MCN24-S ZNDC	20.5	12 × 8



MCN-S

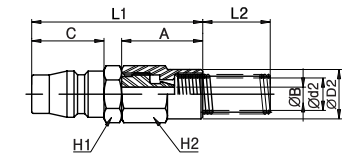
Plug Nut - Spring



MODEL [T]

Tube (Metric) - Thread(R)

MODEL	C	Tube
MCN-S21S ZNDC	20.5	8 × 5
MCN-S23S ZNDC	20.5	10 × 6.5
MCN-S24S ZNDC	20.5	12 × 8



MHH

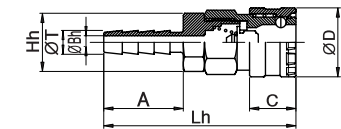
Socket Nipple



MODEL [T]

Tube (Metric) - Thread(R)

MODEL	ØD	ØT
MHH22-S ZNDC	26	9
MHH23-S ZNDC	26	11
MHH24-S ZNDC	26	15



MHM

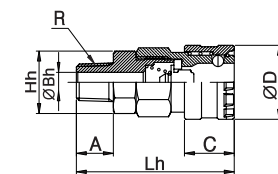
Socket Male



MODEL [T]

Tube (Metric) - Thread(R)

MODEL	ØD	R
MHM22-S ZNDC	26	R1/4
MHM23-S ZNDC	26	R3/8
MHM24-S ZNDC	26	R1/2



MHF

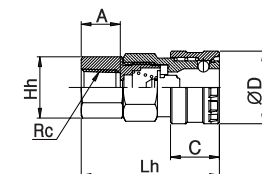
Socket Female



MODEL [ØD]

Tube (Metric) - Thread(R)

MODEL	ØD	Rc
MHF22-S ZNDC	26	Rc1/4
MHF23-S ZNDC	26	Rc3/8
MHF24-S ZNDC	26	Rc1/2



Minor Coupler



Minor Coupler

MHN

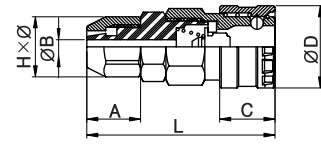
Socket Nut



MODEL [ØD]

Tube (Metric) - Thread(R)

MODEL	ØD	Tube
MHN21-S ZNDC	26	8 × 5
MHN23-S ZNDC	26	10 × 6,5
MHN24-S ZNDC	26	12 × 8



MHN-S

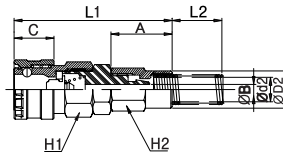
Socket Nut Spring



MODEL [ØD]

Tube (Metric) - Thread(R)

MODEL	ØD	Tube
MHN-S21S ZNDC	26	8 × 5
MHN-S23S ZNDC	26	10 × 6,5
MHN-S24S ZNDC	26	12 × 8



MLY

Branch Y

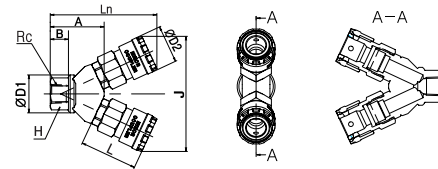


Rc

MODEL [T]

Tube (Metric) - Thread(R)

MODEL	Rc	ØD
MLY 22	Rc1/4	26



MLW

Branch Triple

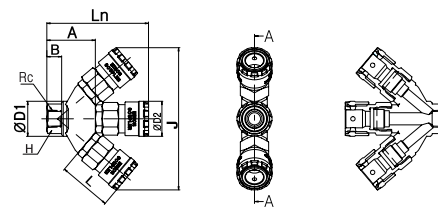


Rc

MODEL [T]

Tube (Metric) - Thread(R)

MODEL	Rc	ØD
MLW 22	Rc1/4	26



Minor Coupler



MLR

Branch R

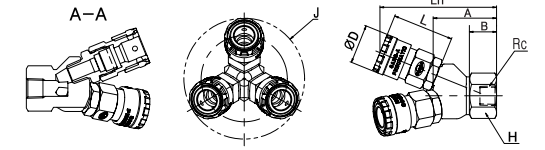


Rc

MODEL [T]

Tube (Metric) - Thread(R)

MODEL	Rc	ØD
MLR 22	Rc1/4	26
MLR 23	Rc3/8	26



Minor Coupler